



Mindtree

A Larsen & Toubro Group Company



Migrated an aging claims administration system for pension & fund Management into Pega cloud

Welcome to possible



The Challenges

The customer is looking for a centralized and organized process for gathering exposure information across geographies and exposure information of property location that could be leveraged for catastrophe analysis and modeling.



Our Solution

Key highlights of the solution

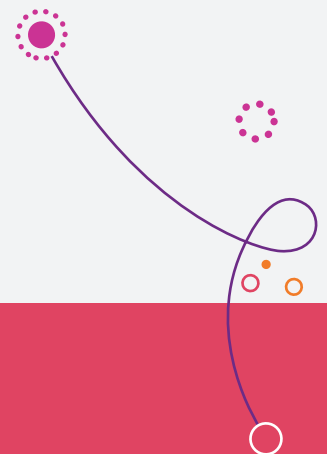
- Improved customer experience by introducing a web-based services to make it easier for the customer's clients to interact at the appropriate stage of the end-to-end process
- Delivered a well designed approval mechanism for each process based on category, business priority, and organization structure
- Straight through processing to facilitate end to end processing with minimal human intervention
- Delivered relevant data to the right person at the right time



The Results

The solution delivered the following benefits:

- Process automation with minimal human intervention
- Overall operational efficiency improvement
- Implemented digitized document processing, thus eliminating need for paper based process
- Quicker roll out and reduced cost



About Mindtree

Mindtree [NSE: MINDTREE] is a global technology consulting and services company that enables enterprises across industries to drive superior competitive advantage, customer experiences and business outcomes by harnessing digital and cloud technologies. A digital transformation partner to more than 260 of the world's most pioneering enterprises, Mindtree brings extensive domain, technology and consulting expertise to help reimagine business models, accelerate innovation and maximize growth. As a socially and environmentally responsible business, Mindtree is focused on growth as well as sustainability in building long-term stakeholder value. Powered by more than 31,900 talented and entrepreneurial professionals across 24 countries, Mindtree — a Larsen & Toubro Group company — is consistently recognized among the best places to work.